

Renaissance effect

Stories are made of encounters
the architect, the company,
intuitions, projects,
skills expressing themselves and shaping
today's "**Made in Italy**",
the son of yesterday's **Renaissance**.



The origins of



Renaissance

In the Sixteenth Century, the **Renaissance taste** became, for most of Europe, its reference point, touchstone and inspirational model. On one hand, there was the **world of culture**, a world full of extraordinary accomplishments mostly achieved thanks to the enlightened patronage of Italian courts. On the other, there was the world of **artisan workshops**, which were busy manufacturing luxury goods for well-off consumers. **Both worlds contributed to creating the myth of Italian good taste.**



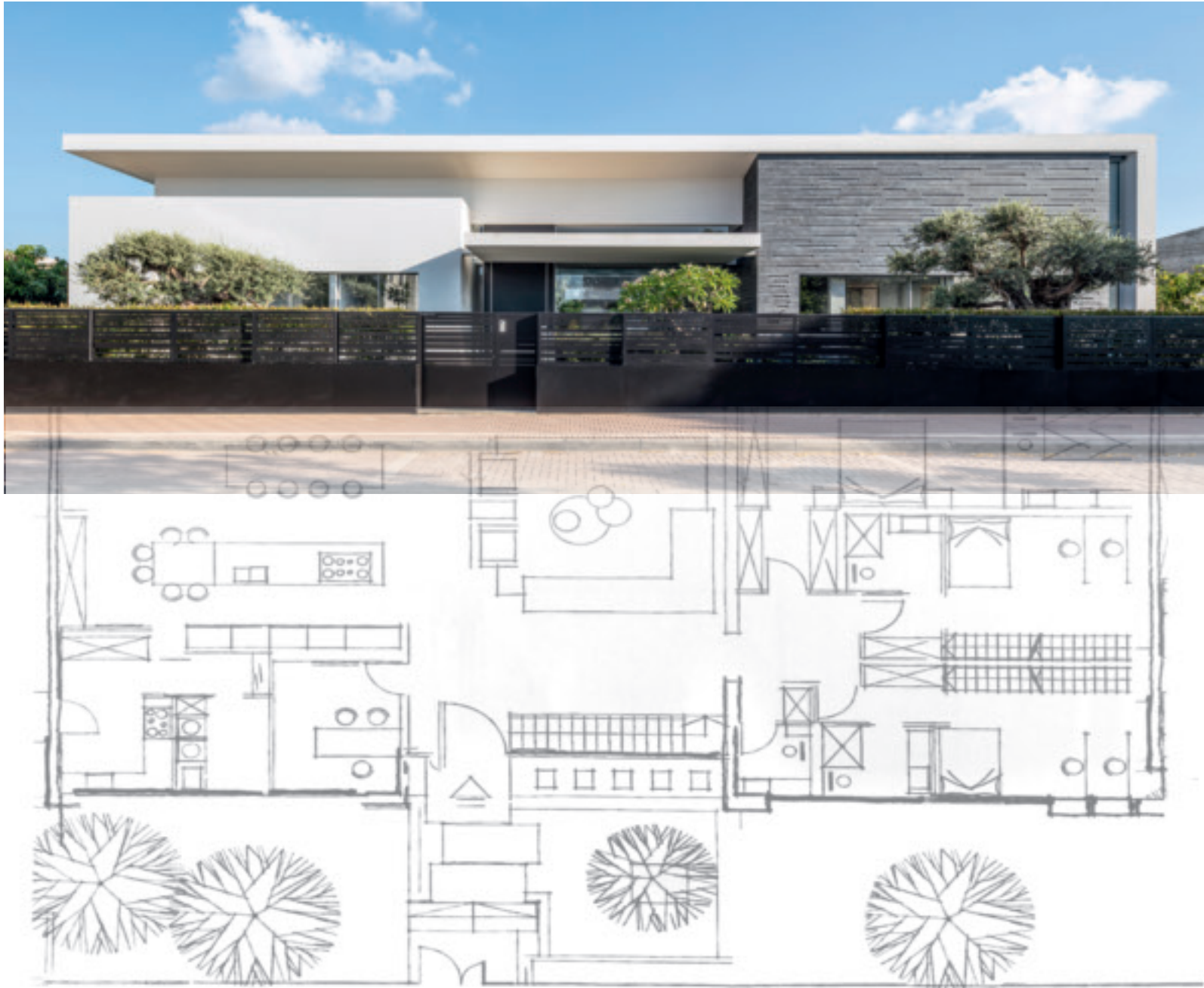


The contemporary



creative genius





Speaking of a **“Renaissance effect”** means delving into the **origins of products “made in Italy”** tracing their roots back to the golden century. Unlike 16th-century Italian courts, today’s patrons are found around the world. The masters are still Italian, though, and if in early Renaissance prominent figures were capable of mastering different skills, today the world in which we live prompts us to **specialize** and, at the same time, requires us to be able to achieve synergies.



A photograph of a modern building at night. The building has a textured, light-colored wall. A window on the left shows an interior view with a blue wall and a sofa. The scene is lit with warm, low-key lighting, creating a dramatic atmosphere. The title "History of a present-day work" is overlaid in white text on the wall.

History of a present-day work





These **skills** are still to be found today and – **thanks to the Italian creative** genius, which is ingrained in an unaltered DNA – are capable of crafting **beauty** and to give **value** to what is generated by the minds and shaped by the hands of present-day masters.







Located in the middle of the island of Albarella, in Italy, surrounded by thick vegetation, a new villa with an imposing, contemporary structure is being built. The project's idea was to highlight the two main entrances which are parts of a sort of "decumanus" crossing the villa from east to west and bringing out the geometric lines that have been designed for this dwelling. The entirely glazed central core of the villa accommodates the entrance, with its majestic, more than 5 mt tall, Synua pivoting door which welcomes and astonishes guests by offering a unique experience: crossing a real portal to enter a magical, yet still unknown, world.

| | |
|--------------|---|
| Project | A private villa |
| Architect | Leonardo Architecture Firm - Genny Augusti architect |
| Location | Island of Albarella, Po River Delta Park |
| Year/Product | 2021/Synua |



Skills meeting

The architect
and the company

"I breathed the air of a company imbued with the values of "made in Italy" products and resonating with my own project values. I saw a company who knew how to face up to the challenges and who chose to dare together with me."

Genny Augusti architect



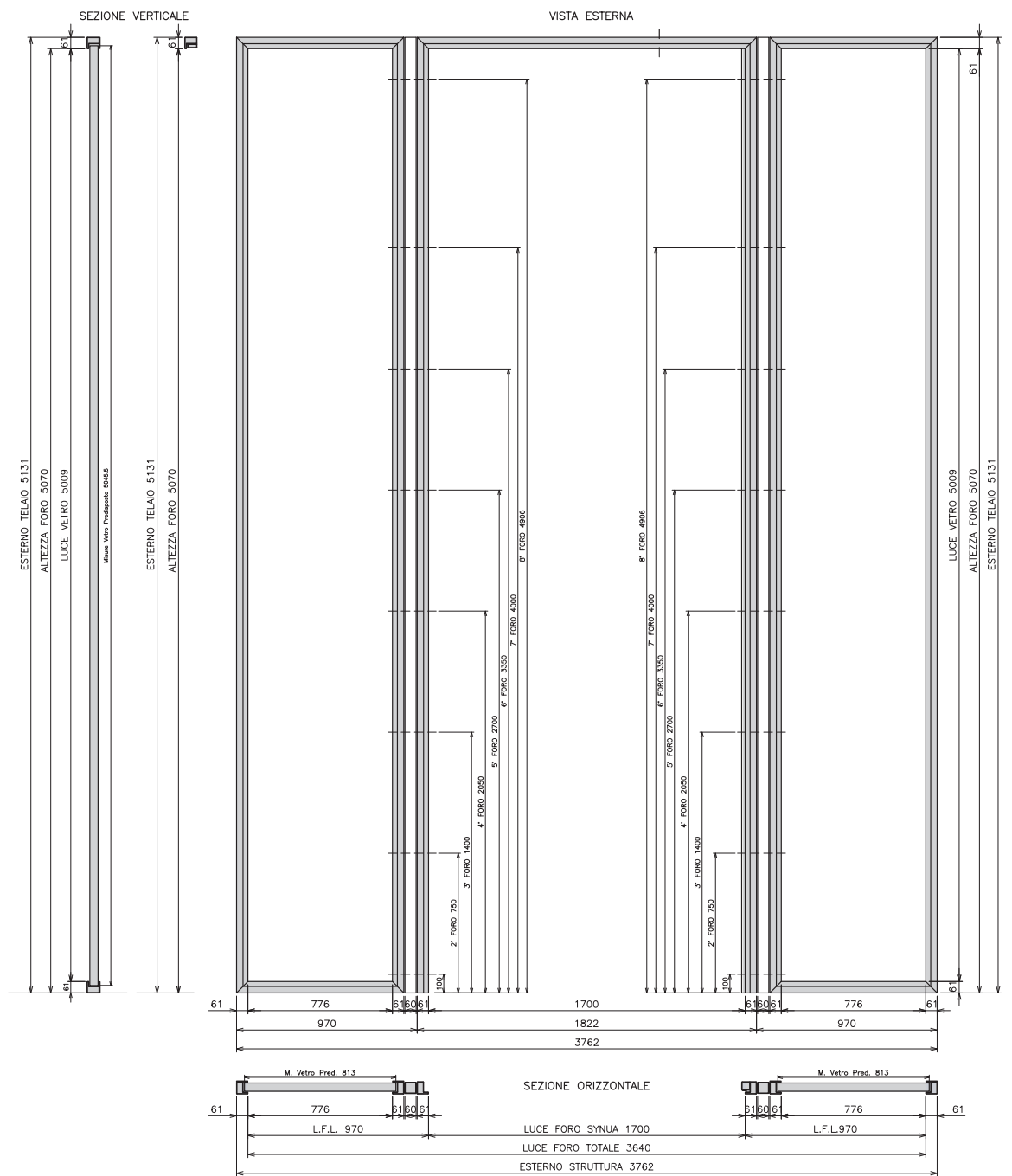
“An architect who gets in touch with us will find a team of experts who are ready to follow him in developing his or her concept of entrance, converting it into a real product. The extraordinary becomes ordinary and we know how to interpret, process and build it.”

Roberto Turrini Oikos area manager



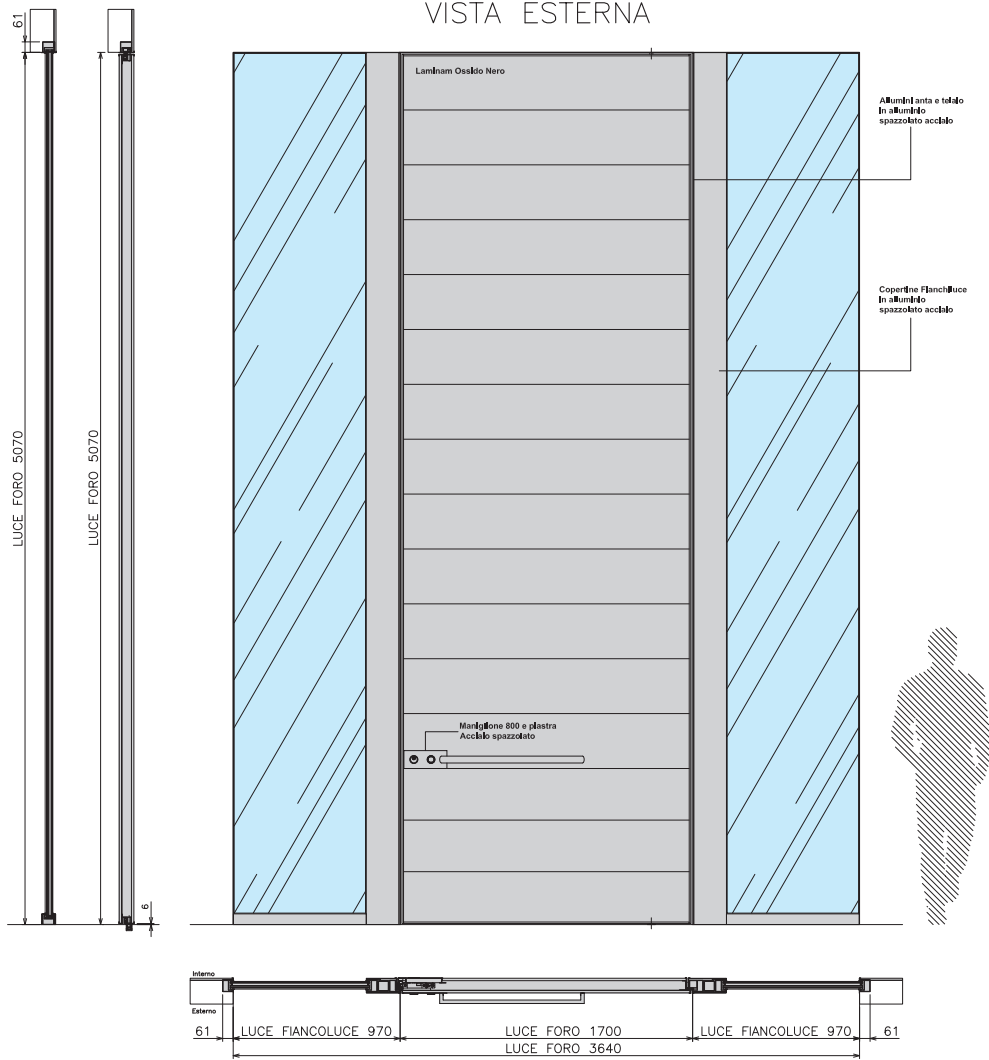


Bespoke design

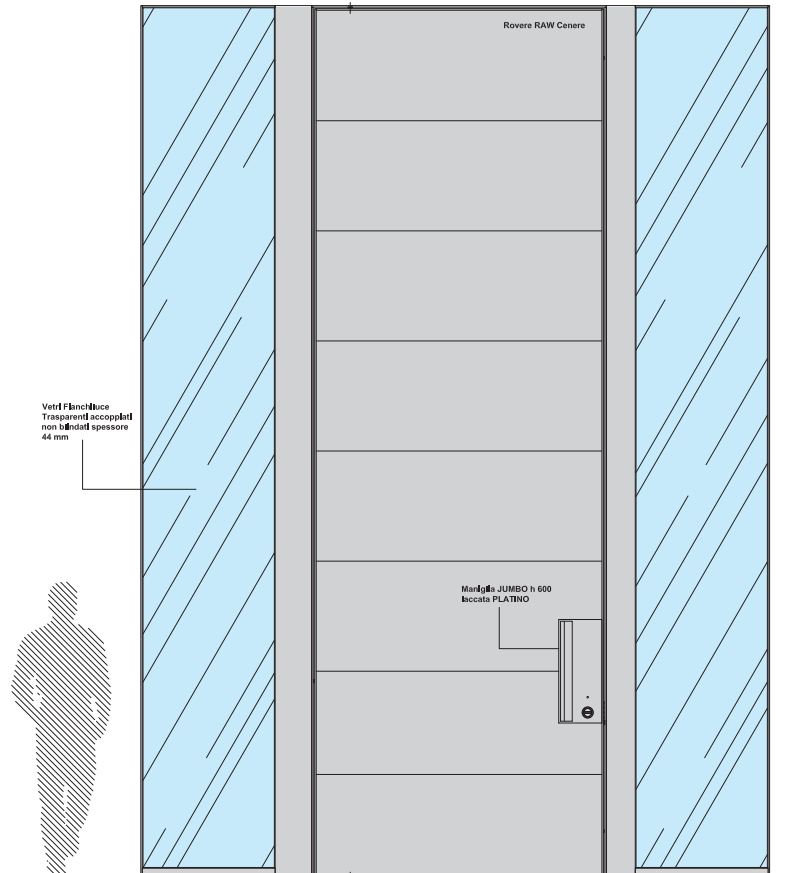




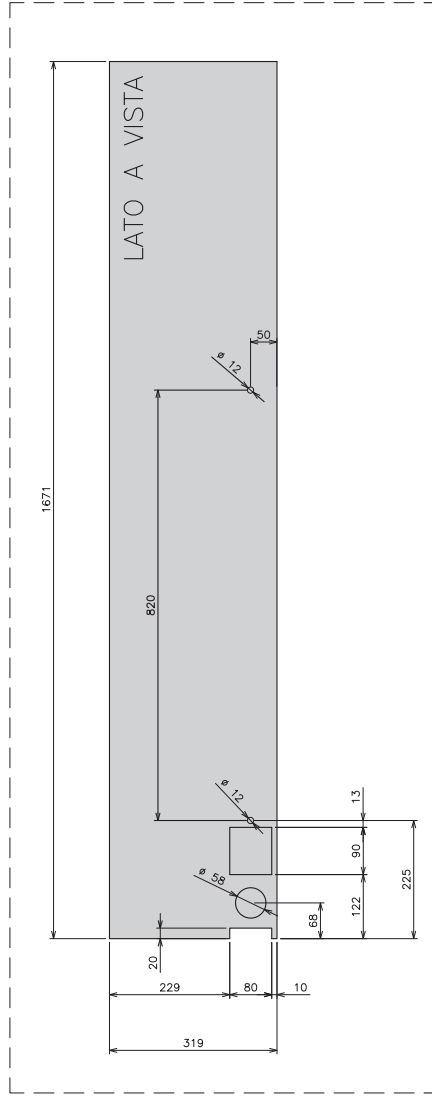
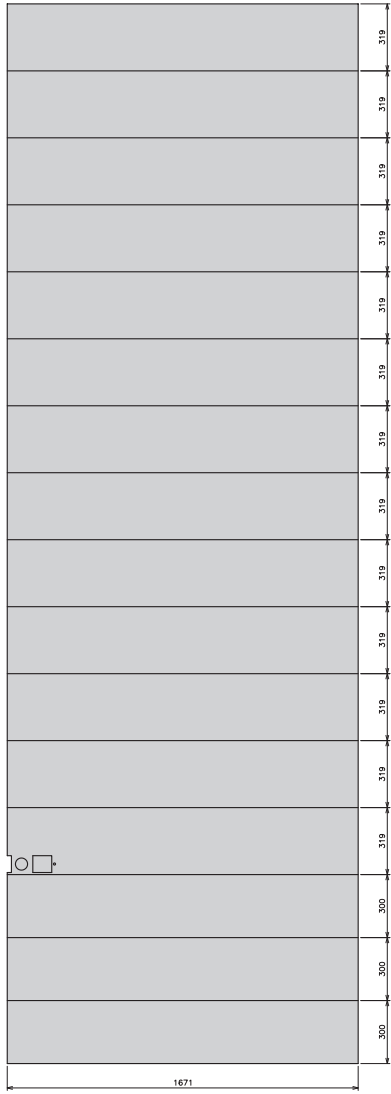
VISTA ESTERNA



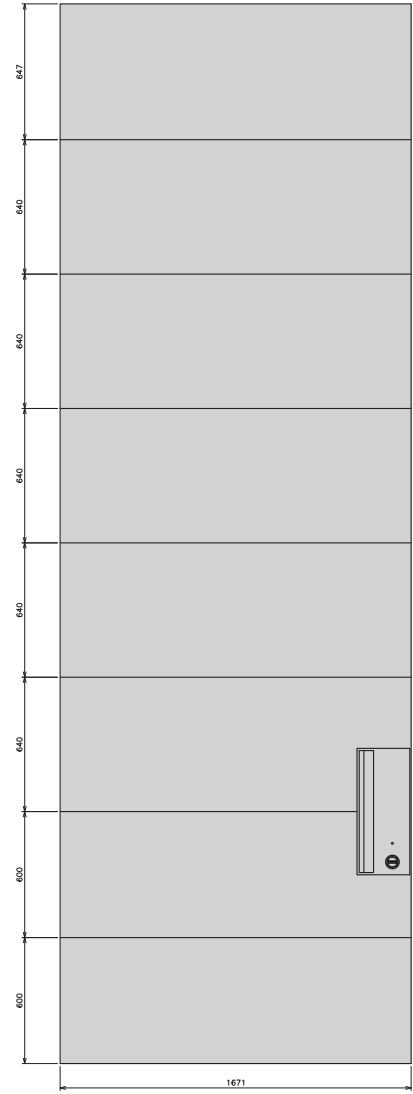
VISTA INTERNA

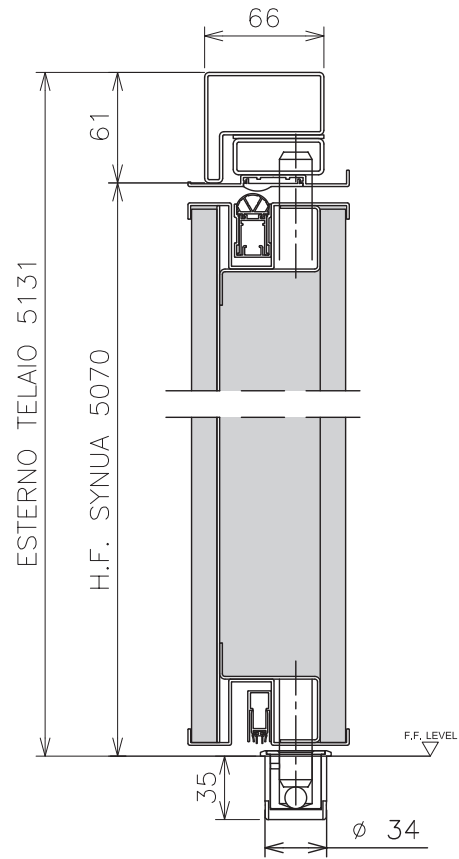
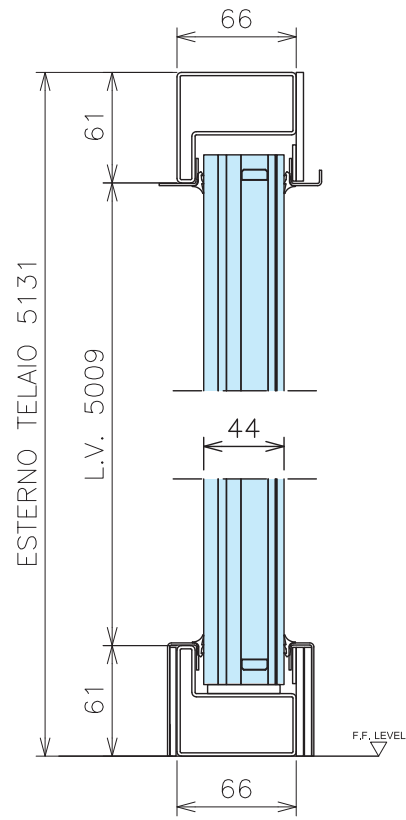


LAMINAM OSSIDO NERO

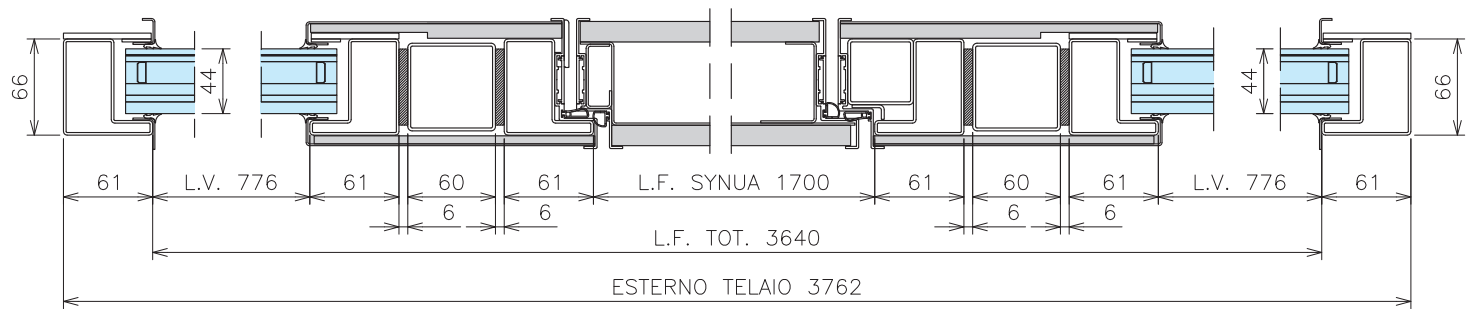


ROVERE RAW CENERE





SEZIONE ORIZZONTALE



An industrialized laboratory







We have called it our own **Arsenal**:
the place where we **manufacture,**
innovate and experiment.



A photograph of a workshop interior. In the foreground, a large, complex metal assembly is laid out on a workbench. The assembly consists of several long, parallel metal beams connected by cross-braces and other structural elements. A worker wearing a hard hat, safety glasses, and a dark jacket is positioned on the left side of the assembly, looking towards it. The background shows a typical industrial workshop environment with various tools, equipment, and a concrete floor. The text "Workshop. Where craftsmanship becomes industry" is overlaid in white, bold, sans-serif font across the upper portion of the image.

Workshop. Where craftsmanship becomes industry



Carpentry work.
The heart of craftsmanship
reaches its peak here



It is our **art laboratory**, a place constantly throbbing, imbued with knowledge and experience, which are deployed to create contemporary beauty.





Assembly.
One by one,
piece by piece,
each door acquires
its identity



These are arts and crafts that tell the story of **our territory**, of skilled workers who meet and work toward a **common goal**.





Testing and packaging.
Important, crucial moments
for ensuring that our doors are
perfectly functional and intact



We speak of industrialization because not only can we offer the greatest skills in **craftsmanship**, we do it within **well-organized and efficient manufacturing processes**.





A synergy of excellence

Tracing quality.

The synergy between the new **“contemporary workers”** is crucial, their talents are wide-ranging and their skills precious. That’s why in our manufacturing processes we believe that a partnership of outstanding craftsmen is the crucial point **for building successful projects and products.**



Oikos has been working together with Adler – a leading Austrian company producing water-based coatings for wood, which continuously improves its products while respecting the environment – for over 20 years.



The twenty-year-long collaboration with Iseo, a leading Italian company producing locking systems, has allowed us to make the lock object one of the most technologically advanced systems on the market.



Our encounter with Laminam marked the beginning of a strong partnership: this is an excellent Italian company manufacturing high-performance ceramic slabs for outdoor use and it has become the best choice of coverings for our entrances.



Backstage







The extraordinary becomes ordinary thanks to a team of technicians and installers who ensure that **entrance architectures** – even large sized – are correctly deployed. The project is considered completed only when successfully installed.







From matter to shape





